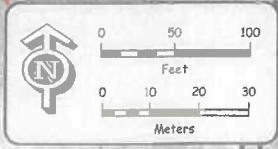
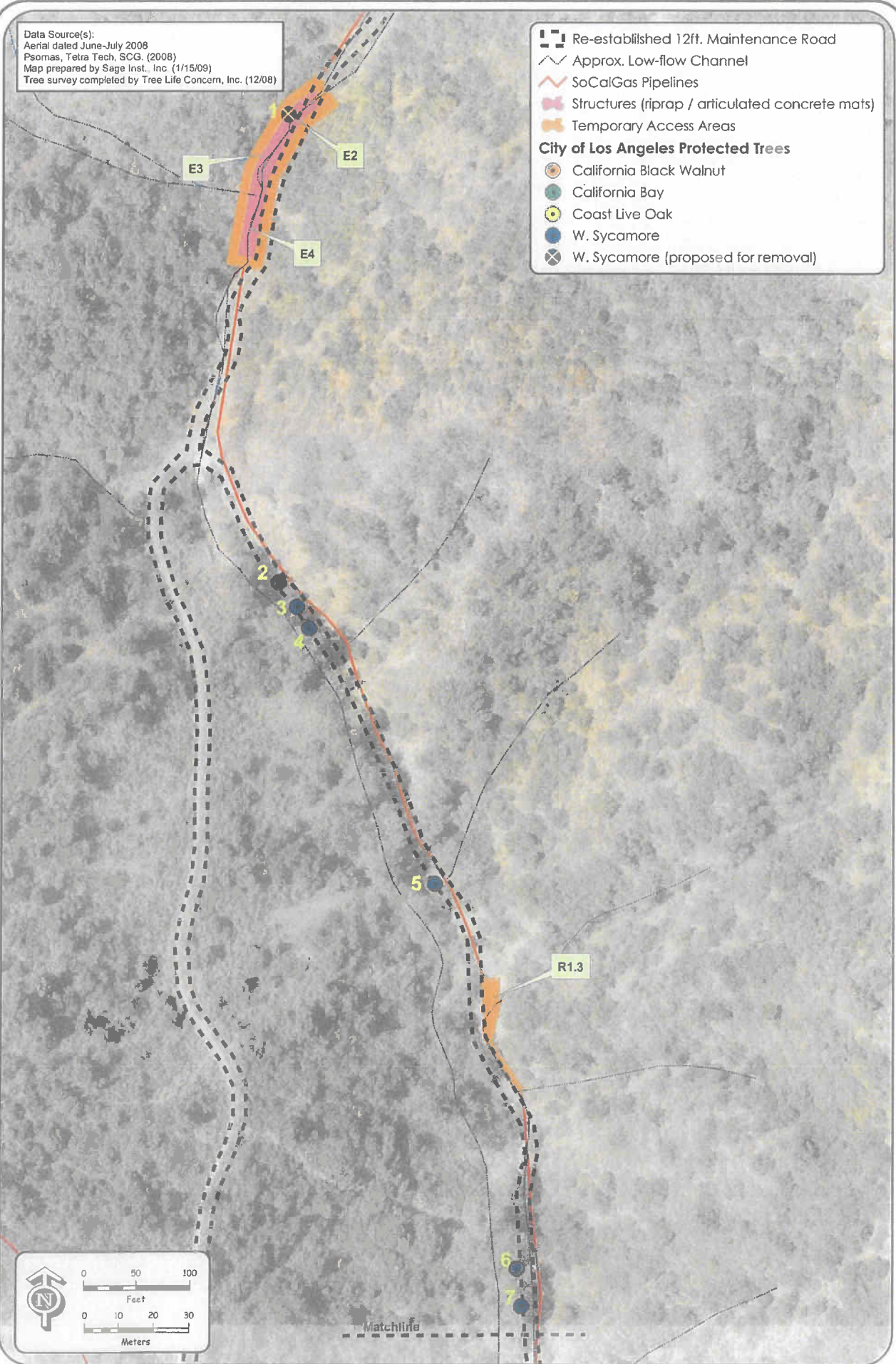


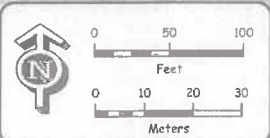
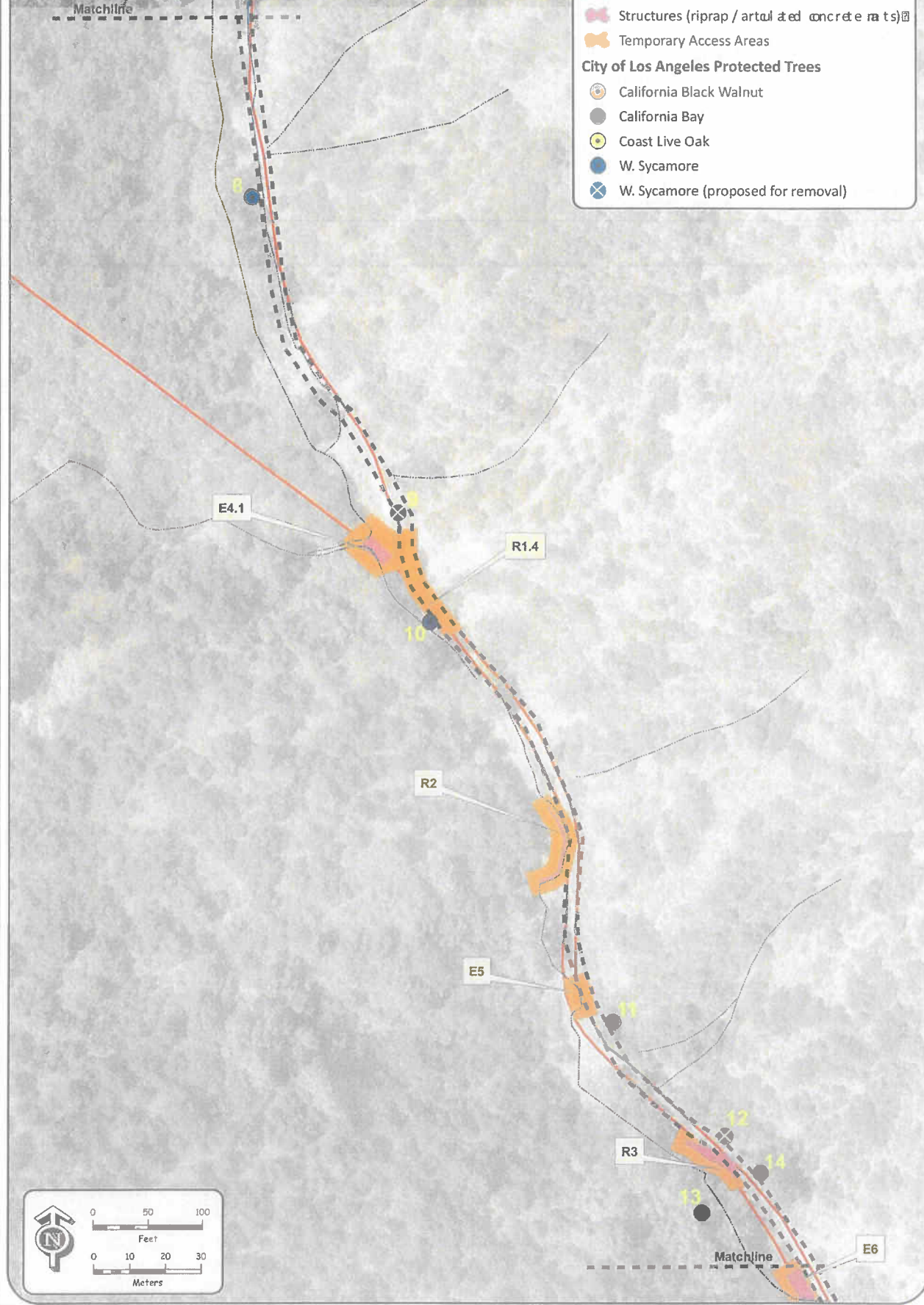
Data Source(s):
 Aerial dated June-July 2008
 Psomas, Tetra Tech, SCG. (2008)
 Map prepared by Sage Inst., Inc. (1/15/09)
 Tree survey completed by Tree Life Concern, Inc. (12/08)

- Re-established 12ft. Maintenance Road
 - Approx. Low-flow Channel
 - SoCalGas Pipelines
 - Structures (riprap / articulated concrete mats)
 - Temporary Access Areas
- City of Los Angeles Protected Trees**
- California Black Walnut
 - California Bay
 - Coast Live Oak
 - W. Sycamore
 - W. Sycamore (proposed for removal)



Data Source(s):
 Aerial dated June-July 2008
 Psomas, Tetra Tech, SCG (2008)
 Map prepared by Sage Inst., Inc. (1/15/09)
 Tree survey completed by Tree Life Concern, Inc. (12/08)











- Re-established 12ft. Maintenance Road
 - Approx. Low-flow Channel
 - SoCalGas Pipelines
 - Structures (riprap / artful & ed concrete mats)
 - Temporary Access Areas
- City of Los Angeles Protected Trees**
- California Black Walnut
 - California Bay
 - Coast Live Oak
 - W. Sycamore
 - W. Sycamore (proposed for removal)

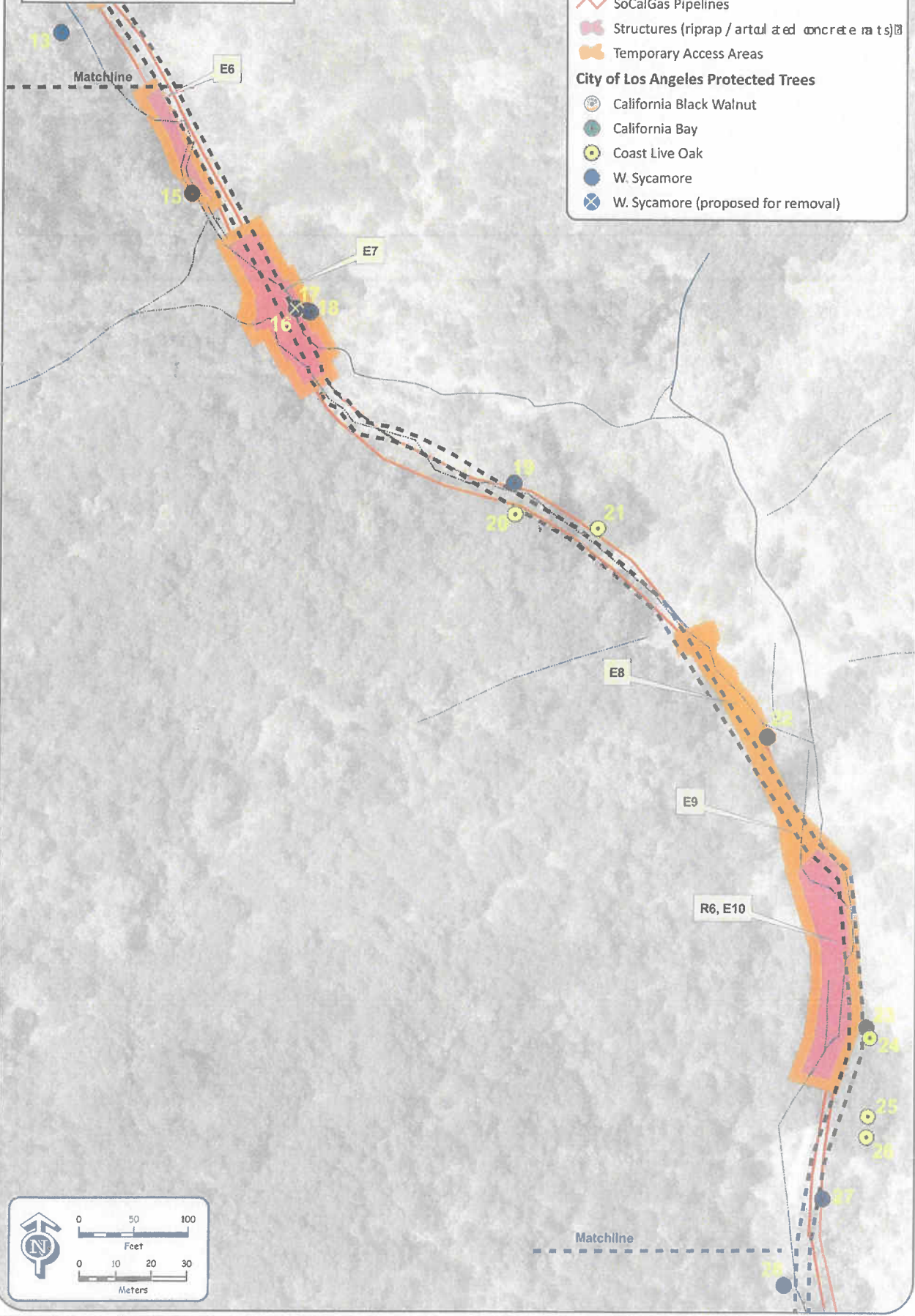


L3003 & L407 (Sullivan Canyon) Pipeline Protection Plan Project
 Southern California Gas Company

T-2
 Tree Survey
 City of Los Angeles

Data Source(s):
 Aerial dated June-July 2008
 Psomas, Tetra Tech, SCG. (2008)
 Map prepared by Sage Inst., Inc. (1/15/09)
 Tree survey completed by Tree Life Concern, Inc. (12/08)

-  Re-established 12f. Maintenance Road
 -  Approx. Low-flow Channel
 -  SoCalGas Pipelines
 -  Structures (riprap / artuæd concrete ra ts)
 -  Temporary Access Areas
- City of Los Angeles Protected Trees**
-  California Black Walnut
 -  California Bay
 -  Coast Live Oak
 -  W. Sycamore
 -  W. Sycamore (proposed for removal)

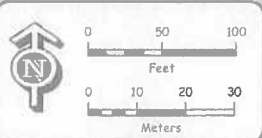
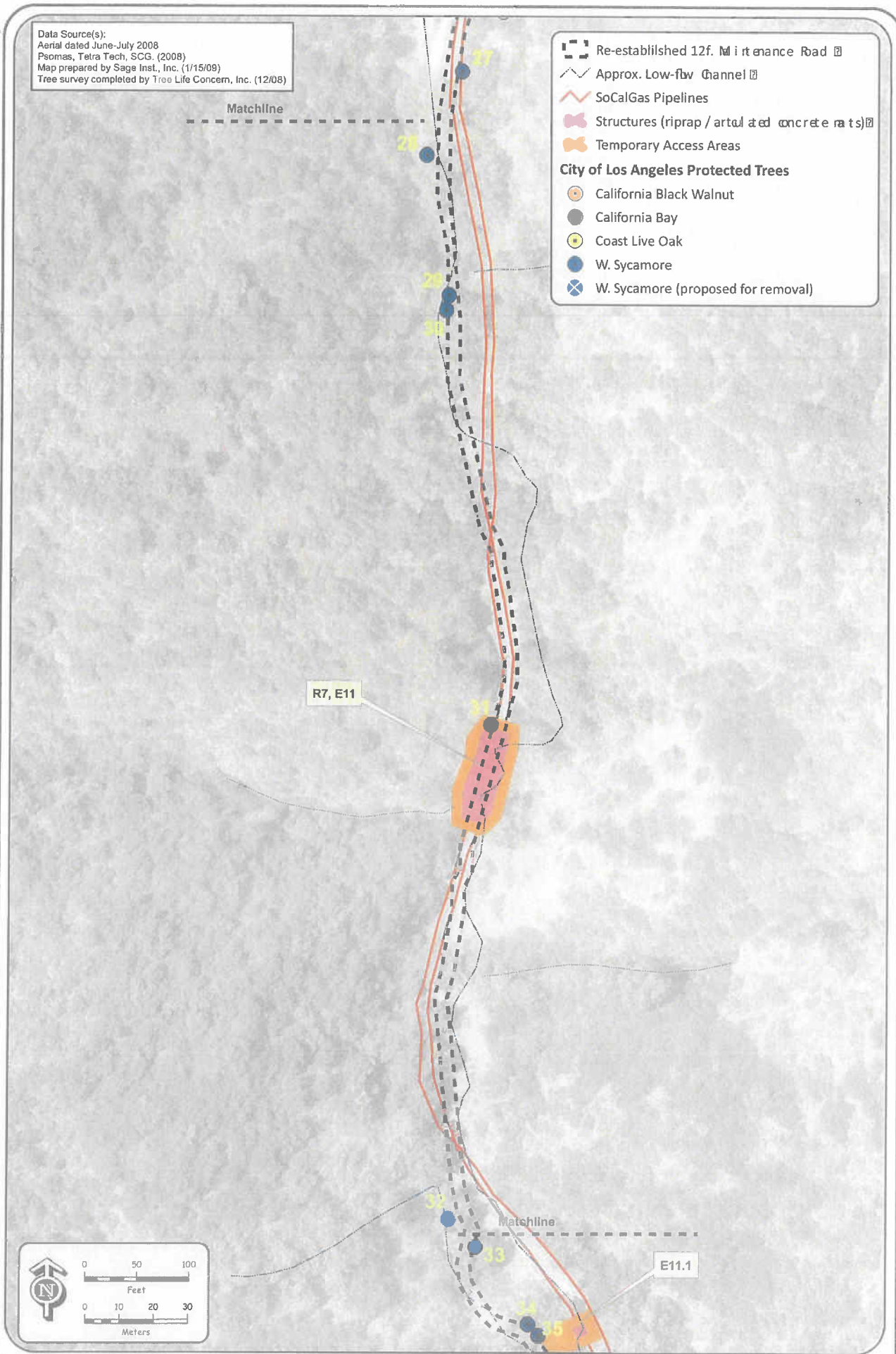


L3003 & L407 (Sullivan Canyon) Pipeline Protection Plan Project
 Southern California Gas Company

T-3
 Tree Survey
 City of Los Angeles

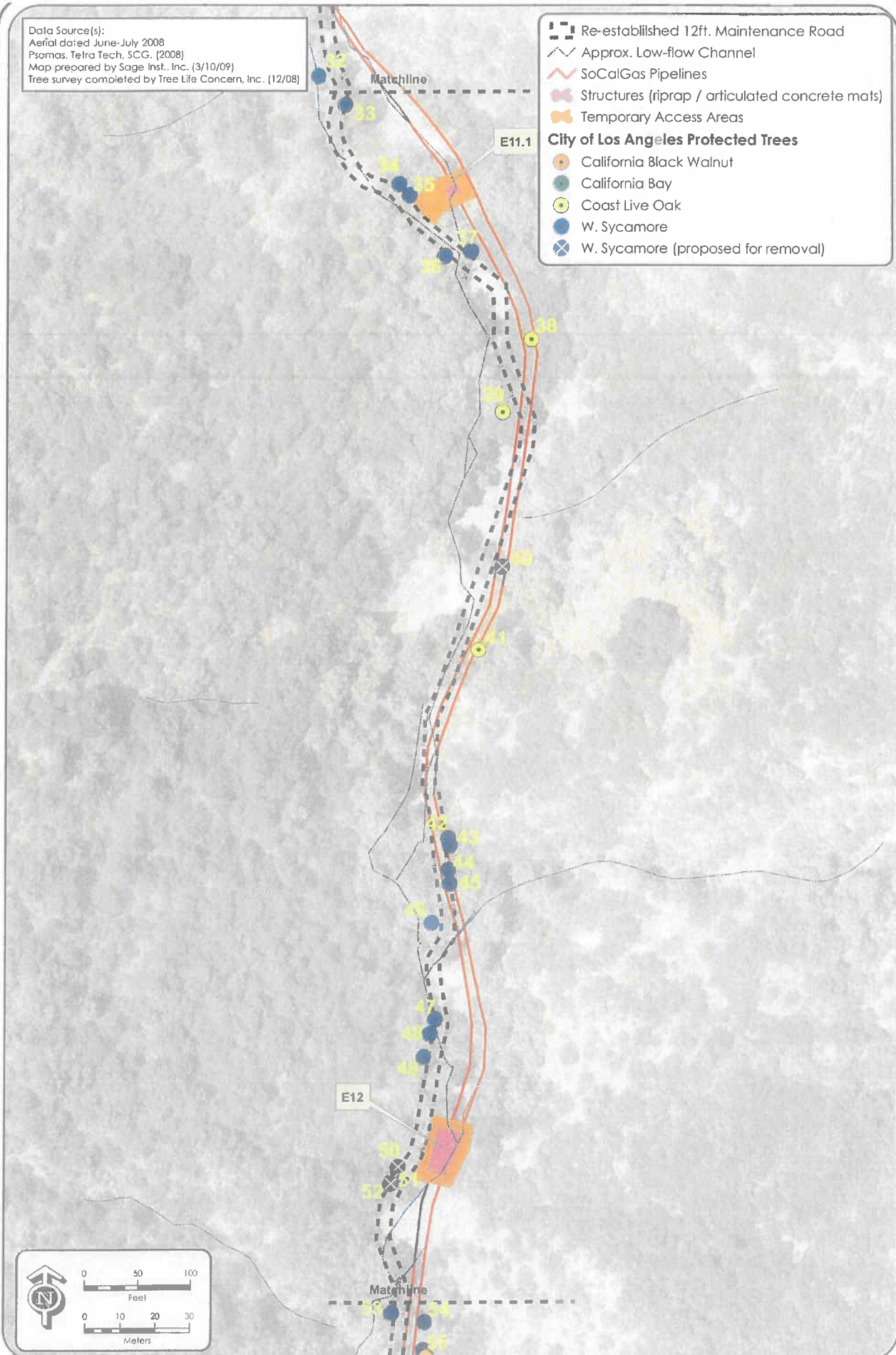
Data Source(s):
 Aerial dated June-July 2008
 Psomas, Tetra Tech, SCG. (2008)
 Map prepared by Sage Inst., Inc. (1/15/09)
 Tree survey completed by Tree Life Concern, Inc. (12/08)

- Re-established 12f. Maintenance Road
 - Approx. Low-flow Channel
 - SoCalGas Pipelines
 - Structures (riprap / art and concrete rafts)
 - Temporary Access Areas
- City of Los Angeles Protected Trees**
- California Black Walnut
 - California Bay
 - Coast Live Oak
 - W. Sycamore
 - W. Sycamore (proposed for removal)



Data Source(s):
 Aerial dated June-July 2008
 Psomas, Tetra Tech, SCG, (2008)
 Map prepared by Sage Inst., Inc. (3/10/09)
 Tree survey completed by Tree Life Concern, Inc. (12/08)

- Re-established 12ft. Maintenance Road
 - Approx. Low-flow Channel
 - SoCalGas Pipelines
 - Structures (riprap / articulated concrete mats)
 - Temporary Access Areas
- City of Los Angeles Protected Trees**
- California Black Walnut
 - California Bay
 - Coast Live Oak
 - W. Sycamore
 - W. Sycamore (proposed for removal)



L3003 & L407 (Sullivan Canyon) Pipeline Protection Plan Project
 Southern California Gas Company

T-5 (Version 2)
 Tree Survey
 City of Los Angeles

Data Source(s):
 Aerial dated June-July 2008
 Psomas, Tetra Tech, SCG. (2008)
 Map prepared by Sage Inst., Inc. (1/15/09)
 Tree survey completed by Tree Life Concern, Inc. (12/08)

- Re-established 12ft. Maintenance Road
 - Approx. Low-flow Channel
 - SoCalGas Pipelines
 - Structures (riprap / artificial concrete mats)
 - Temporary Access Areas
- City of Los Angeles Protected Trees**
- California Black Walnut
 - California Bay
 - Coast Live Oak
 - W. Sycamore
 - W. Sycamore (proposed for removal)

