

Trail Use Change Process

Request for change submitted to District

Request received by a park unit for a change, deletion or additional use on an existing trail.

Evaluation and Trail Log Prepared

An evaluation of the trail will take place by qualified staff and performing a trail inspection taking into account circulation, safety, trail sustainability, soils and geologic conditions, impacts to the resources and the park operations. A detailed trail log will be developed taking into consideration these criteria.

Trail Use Change Survey Completed

With a detailed evaluation, a "Trail Use Change Survey" will be completed with representatives from Visitor Services, Technical Services, Natural and Cultural Services, Defensive Planning and Park Management giving input.

Construction Work Log Prepared

A Construction Work Log will be prepared based on the recommended physical trail modifications needed to accommodate the change in use.

Project Evaluation Form and CEQA

When a trail is opened to additional use types some form of modification will be necessary to accommodate that change. Trail modifications will require a Project Evaluation Form (PEF) and CEQA compliance. The PEF will record the Park Unit's decision of the change in use. All change in use evaluations will have an accompanying PEF document which may require the filing of a Categorical Exemption with the State Clearing House.

Gather input from local trail user groups or Local Trail Advisory Committee

Recommendation by Evaluation Team

With the completion of a "Trail Use Change Survey" there will be a recommendation of allowing the change in use, not allowing the change in use, conditional approval pending modification of the existing trail or rerouting of the existing trail or recommendation of a Unit Road and Trail Management Plan.

Categorical Exemption Required for Change in Use

MND Required for Change in Use

EIR Required for Change in Use

Additional Studies Required

- Unit Road & Trail Management Plan
- Trail Reroute
- Trail Tread Modifications

No Project

Construction Cost Estimate Prepared

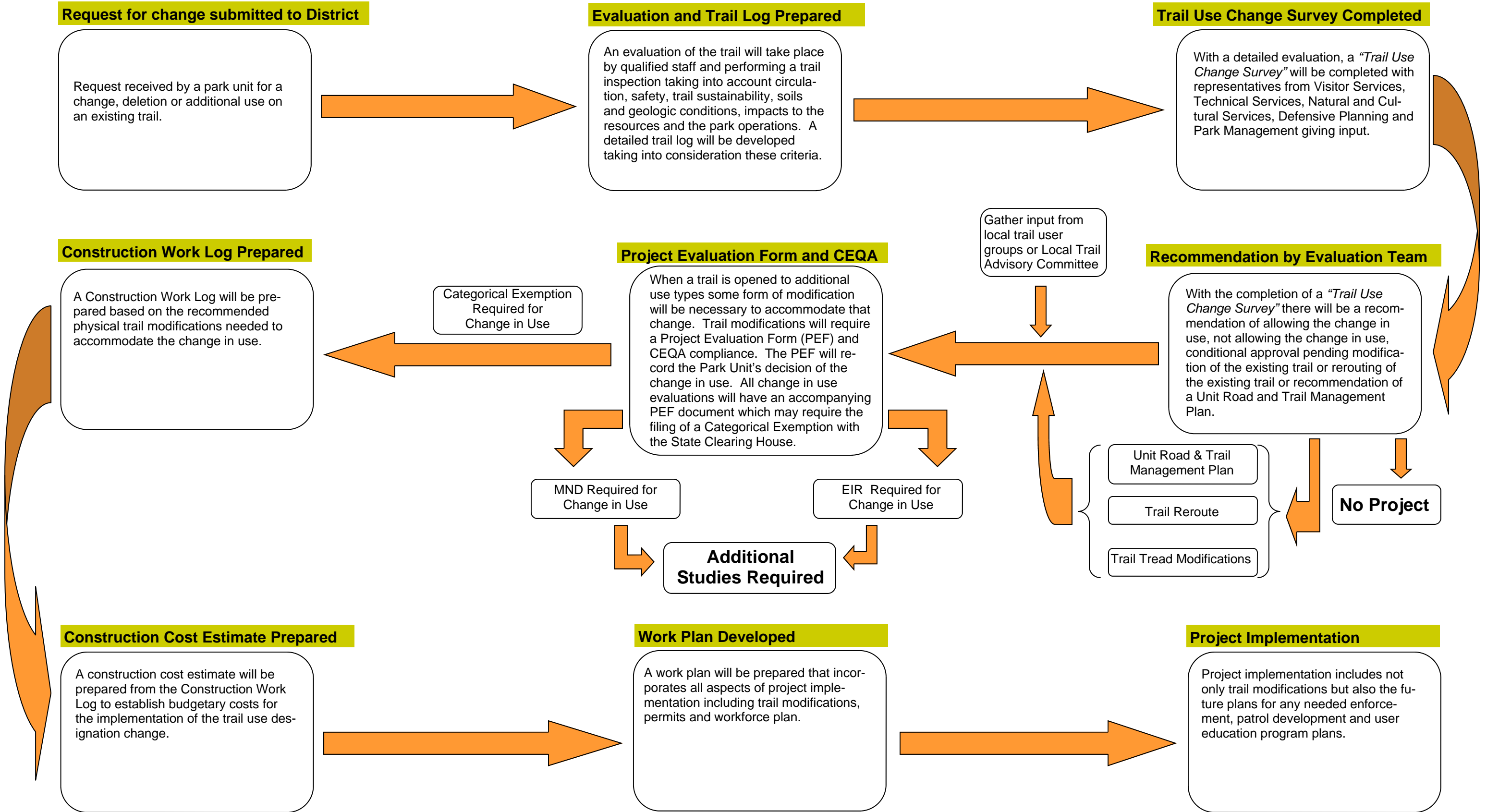
A construction cost estimate will be prepared from the Construction Work Log to establish budgetary costs for the implementation of the trail use designation change.

Work Plan Developed

A work plan will be prepared that incorporates all aspects of project implementation including trail modifications, permits and workforce plan.

Project Implementation

Project implementation includes not only trail modifications but also the future plans for any needed enforcement, patrol development and user education program plans.



Trail Use Change Survey

Version 1-July 2008



Park (Including Classification): _____
 Trail Name: _____
 Location in Unit: _____
 Current Use Designation(s): _____
 Proposed Use Type Change: _____
 Use Change Initiated By: _____
 Evaluation Date: _____

Evaluation Criteria

	Yes	No
Based on Criteria, is this Use Change Compatible?		
Based on Criteria, does this Use Change Enhance Circulation?		
Based on Criteria, will this Use Change Decrease Trail Safety?		
Based on Criteria, is the Trail Sustainable Under Existing Use Conditions?		
With the Proposed Use Change Will the Trail be Sustainable		
Based on Criteria, will the Proposed Used Change Create Negative Impacts to the Natural or Cultural Resources?		
Will the Proposed Use Change and/or Modifications to the Existing Trail Create Significant Facility Maintenance or Operational Work Load?		
Are there other Routes in the Unit or on Nearby Public Lands that Adequately Accommodate the Type of Trail Use Proposed?		
Would needed modifications trigger outside agency permits?		

Summary Criteria Evaluation Based on the Synthesis of Data from the Following Pages

Insert Map of Area of Proposed Use Change

Recommendation Based on Evaluation Criteria - Substantiate in Comment Box

Recommend that the Park's General Plan or Road and Trail Management Plan be Developed or Amended to Evaluate this Change in Use		
Recommend that the Proposed Change in Trail Use be Approved		
Recommend that the Proposed Change in Trail Use be Approved After Design Modifications are Implemented:		
Recommend that the Major Reroute be Considered to Accommodate Proposed Change in Use		
Recommend that the Proposed Change in Trail Use be Approved with Management Options such as: Alternating Days of Use, One Way Travel, Seasonal Closures etc.		
Recommend that the Proposed Change Use be Put on Hold - See Comment Box Below		

Trail Use Change Survey

Version 1-July 2008

Comments:

Evaluation Team Members: _____

Multiple trail route use change proposals in one unit may recommend development or amendment of a unit wide road and trail transportation management plan.

Qualified Department District Staff, including a DPR Trained Trail Coordinator will complete this survey and checklist to:

- (1) Determine the sustainability, trail user safety and feasibility of a proposed change in allowed uses for a single existing trail.
- (2) Determine the appropriateness of proposed use change in relation to cumulative impacts to the existing uses (users, routing, hiking opportunities, etc)
- (3) Support and Document the Request with a Project Evaluation Form and associated CEQA document.
- (4) Validate the existing conditions described on the attached trail log. The trail log should address typical log elements and positive and negative attributes related to the evaluation criteria.

Evaluation Criteria	Yes	No	Comments
#1 Existing Conditions			
Check any existing conditions:			
1.1			Describe positive and negative impacts of the proposed change and any other details related to the question to assist decision is made . Put N/A in "No" section for criteria not applicable to trail evaluated.
Does the Park Unit have a General Plan?			
1.2	If Yes, does it address specific trail uses or other management directive supporting the proposed use change		
1.3	Is the "Trail" Proposed a Controlled Access Road		
1.4	Does the Park have an approved road and trail management plan?		
Trail or Road Surface Type:		Check Applicable	
1.5	Asphalt		
1.6	Concrete		
1.7	Gravel		
1.8	Native Material		
Trail and Road Facility Use Type:		Check Applicable	
1.9	Public		

Trail Use Change Survey

Version 1-July 2008

Evaluation Criteria		Yes	No	Comments
1.10	Administration			
1.11	Fire Break			
1.12	Motorized Recreation			
1.13	Non-Motorized Recreation			
1.14	ADA Accessible Route of Travel			
1.15	Does the proposed route connect to a Trail Head or other Accessible Facility?			
1.16	Road Used as Trail Route			
	Trail Specific Facility Use Type			
1.17	Trail Class I, II, III, IV			Enter Trail Classification Here - Not Yes or No
	Current Trail Uses Allowed (on road or trail)	Yes	No	
1.18	Pedestrian			
1.19	Mountain Bike			
1.20	Equestrian			
1.21	Other - Specify in Comment Box			
#2 Compatibility for Multi-User Trails				
Check any existing conditions:				
2.1	Would the proposed use change create incompatible conflict with existing facilities (trail heads, stables, campgrounds etc)?			
2.2	Is it located on a trail already in a high use area and are there resource impacts?			
2.3	Is there significant user conflict?			
2.4	Is there evidence of unauthorized use?			
2.5	Is it consistent with park classification?			
2.6	Does the Proposed Use Currently Exist in the Park?			
2.7	Is there documented survey or statistical information that identifies a need for proposed additional use designation?			
2.8	Is the existing trail considered ADA accessible by US Access Board?			
2.9	Based on Above Criteria, Is this Use Change Compatible?			
#3 Affects to Trail Unit User Circulation Patterns				
Check any existing conditions:				
3.1	Does the proposed use change provide a loop or semi loop connection?			
3.2	Does the change provide a legal or legitimate route for existing unauthorized trail uses or user created trail?			

Trail Use Change Survey

Version 1-July 2008

Evaluation Criteria		Yes	No	Comments
3.3	Does the change provide a connection to adjacent land agency which allows similar use?			
3.4	Does it improve circulation or relieve congestion on other high use or at capacity trails?			
3.5	Does it create potential additional use changes on surrounding/adjacent or connecting trails or facilities?			
3.6	Does it require a seasonal closure to mitigate resource impacts?			
3.7	If yes, will seasonal closures disrupt circulation patterns?			
3.8	Based on Above Criteria, Does this Use Change Enhance Circulation			
#4 Effects to Trail Use Safety				
Check any existing conditions:				
4.1	With standard cyclic trail brushing (as required by the trail Class), is there adequate site distance for safe warning for the proposed use change?			
4.2	With standard cyclic slough and berm removal, is there adequate tread width for safe passage for the proposed multi-user designation?			
4.3	With equestrian mutli-use, are tread widths safe for the pedestrian, mobility devices and/or bike user to retreat to the downhill side of trail?			
4.4	If tread widths for equestrian use is narrow, are the fill slopes gentle, firm and stable for the pedestrian, mobility devices and/or bike user to retreat to the downhill side of trail?			
4.5	Does the trail have sinuosity that slows bike users?			
4.6	Can sinuosity be designed into existing trail tread alignment to slow bike users?			
4.7	Does the use change require removal of special concern plant species to maintain adequate trail widths and sight distances?			
4.8	Would use type change existing conditions or cause problems for enforcement of park rules and regulations?			
4.9	Would use type change existing conditions or cause problems for emergency response?			
4.10	Would alternating days of use reduce the change of use impacts to reduce safety concerns?			

Trail Use Change Survey

Version 1-July 2008

Evaluation Criteria		Yes	No	Comments
4.11	Based on Above Criteria, Will this Use Change Decrease Trail Safety?			
#5 Effects on Trail Sustainability				
Check any existing conditions:				
5.1	Are trail grades commensurate with soil types, use type, season use and facilitate natural hydrologic drainage patterns such as sheet flow?			
5.2	Is the trail drainage being captured and released on hillsides and not at natural topographic drainage features?			
5.3	Trail tread firm and stable?			
5.4	Are there abrupt changes in trail running grade?			
5.5	Is the fill slope stable?			
5.6	Is the back slope/cut bank stable?			
5.7	Does the trail tread remain firm and stable in wet conditions?			
Supporting Data From Trail Log				
5.8	Number of Water Bars required for proper drainage			
5.9	Lineal Footage of Berms			
5.10	Lineal Footage of Ditches			
5.11	Lineal Footage Rills and Ruts			
5.12	Lineal Footage log Entrenched Trail			
Describe the locations and different types of soil types and matrix encountered on trail				
5.13	Rocky			
5.14	Rocky/Partial Soil Profile			
5.15	Full Soil Profile			
5.16	Partial Soil Profile/Sandy			
5.17	Sandy			
5.18	Based of Above Criteria, is the Trail Sustainable Under Existing Use Conditions?			
5.19	With the Proposed Use Change, will the Trail be Sustainable?			
	If Not Sustainable, Can Any of the Following Measures be Implemented to Make the Trail Sustainable for the Proposed Use Change?			

Trail Use Change Survey

Version 1-July 2008

Evaluation Criteria		Yes	No	Comments
	Minor reconstruction of trail tread would:			
5.20	Correct lack of outslope			
5.21	Eliminate abrupt grade changes			
5.22	Stabilize unstable cut bank			
5.23	Stabilize unstable fill slope			
5.24	Correct rilling, rutting			
	Provide for firm and stable surfaces			
5.25	Minor realignment of trail within immediate existing trail proximity would:			
5.26	Stabilize unstable cut bank			
5.27	Stabilize unstable fill slope			
5.28	Eliminate abrupt grade changes			
5.29	Correct unsustainable grades			
5.30	Correct Lack of sinuosity			
5.31	Based on Above Criteria, Can the Trail be Made Sustainable for Proposed Use Conditions?			
5.32	Can wet weather closures establish or maintain Sustainability?			
5.33	Should a Major Reroute be Considered to Establish Sustainability?			
#6 Effects or Impacts to the Natural or Cultural Resources				
	Would proposed use change and/or needed modifications significantly impact:			
6.1	erosion of existing Trail Tread?			
6.2	geologic conditions?			
6.3	sensitive wildlife habitat?			
6.4	sensitive vegetation habitat?			
6.5	a riparian or stream environment zone			
6.6	a sensitive historic feature?			
6.7	Is the Trail a historic feature?			
6.8	Based of Above Criteria, Would the Proposed Used Change Create Negative Impacts to the Natural or Cultural Resources?			
#7 Effects or Impacts to the Facility Maintenance and Operational Costs				
	Would proposed use change and/or needed modifications:			

Trail Use Change Survey

Version 1-July 2008

Evaluation Criteria		Yes	No	Comments
7.1	Change the current classification of the trail?			
7.2	Create the need for fill slope or cut bank retaining walls?			
7.3	Require aggregate or other trail hardening techniques required to maintain tread stability?			
7.4	Require additional or upgrading of turnpikes or causeways?			
7.5	require additional bridges or puncheons?			
7.6	Require additional maintenance to maintain current existing conditions?			
7.7	Require additional management practices to maintain user compliance?			
7.8	Could the proposed modifications be completed by non-department work forces?			
7.9	Could the proposed modifications be maintained by non-department work forces with no cost to State Parks?			
7.10	Are durable pinch point native materials readily available?			
7.11	If alternating days of use by user type is a management practice, is alternating days of use able to be enforced?			
7.12	Will the Proposed Use Change and/or Modifications to the Existing Trail Create Significant Facility Maintenance or Operational Work Loads?			